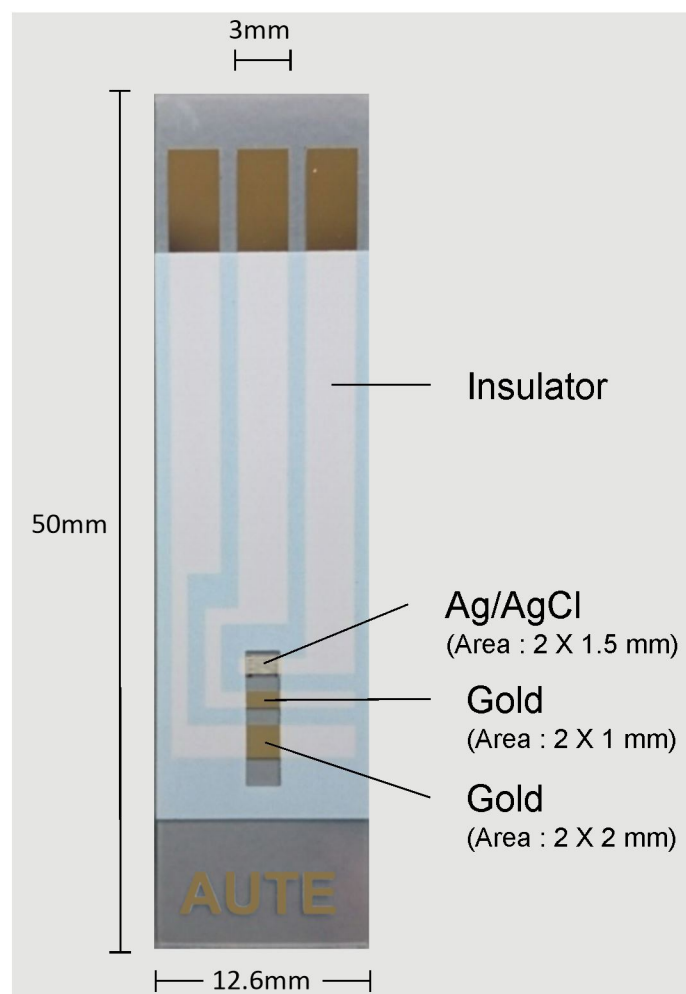


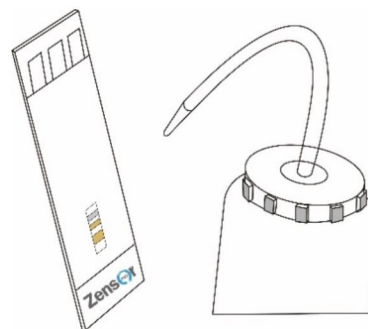
### PRODUCT DESCRIPTION



### Before Use (Recommend)

**A** Take out the electrode from the bag.

**B** Flush it with DI water for several times.



**C** Electrochemical activation of electrode with cyclic voltammetry which the parameters are showing below.

Scan range: 0.8 to 1.3V (vs Ag/AgCl, Pseudo RE), Scan rate: 100 mV/s, Segment: 10, Solution: 0.1 M phosphate buffer solution (pH=7). Then, flush it with DI water and air dried. **Note: Do not use the PBS buffer which contains Cl<sup>-</sup> inside, Cl<sup>-</sup> may corrode gold area.**

### DESCRIPTION FOR USE

1. AUTE200AgCl is supplied ready for use under acid (< 2 M H<sub>2</sub>SO<sub>4</sub>) and basic media (< 1 M NaOH).
2. Avoid over bending while operating.
3. Keep it away from organic media.

### Storage

Keep it in a dry place away from sunlight and the optimal temperature is in the range of 20 to 40 °C.